

## Supporting Information

### Effect of DNA Methylation on the Velocity of DNA Translocation Through a Nanochannel

Xiaoyin SUN,<sup>\*1,\*2†</sup> Takao YASUI,<sup>\*1,\*2,\*3</sup> Takeshi YANAGIDA,<sup>\*4,\*5</sup> Noritada KAJI,<sup>\*1,\*2,\*3</sup> Sakon RAHONG,<sup>\*1,\*2</sup> Masaki KANAI,<sup>\*4</sup> Kazuki NAGASHIMA,<sup>\*4</sup> Tomoji KAWAI,<sup>\*5</sup> and Yoshinobu BABA,<sup>\*1,\*2,\*6</sup>

*\*1 Department of Applied Chemistry, Graduate School of Engineering, Nagoya University, Furo-cho, Chikusa-ku, Nagoya 464-8603, Japan*

*\*2 ImPACT Research Center for Advanced Nanobiodevices, Nagoya University, Furo-cho, Chikusa-ku, Nagoya 464-8603, Japan*

*\*3 Japan Science and Technology Agency (JST), PRESTO, 4-1-8 Honcho, Kawaguchi, Saitama 332-0012, Japan*

*\*4 Institute of Materials Chemistry and Engineering, Kyushu University, 6-1 Kasuga-Koen, Kasuga, Fukuoka 816-8580, Japan*

*\*5 Institute of Scientific and Industrial Research, Osaka University, 8-1 Mihogaoka-cho, Ibaraki, Osaka 567-0047, Japan*

*\*6 Health Research Institute, National Institute of Advanced Industrial Science and Technology (AIST), Takamatsu 761-0395, Japan.*

---

† To whom correspondence should be addressed.

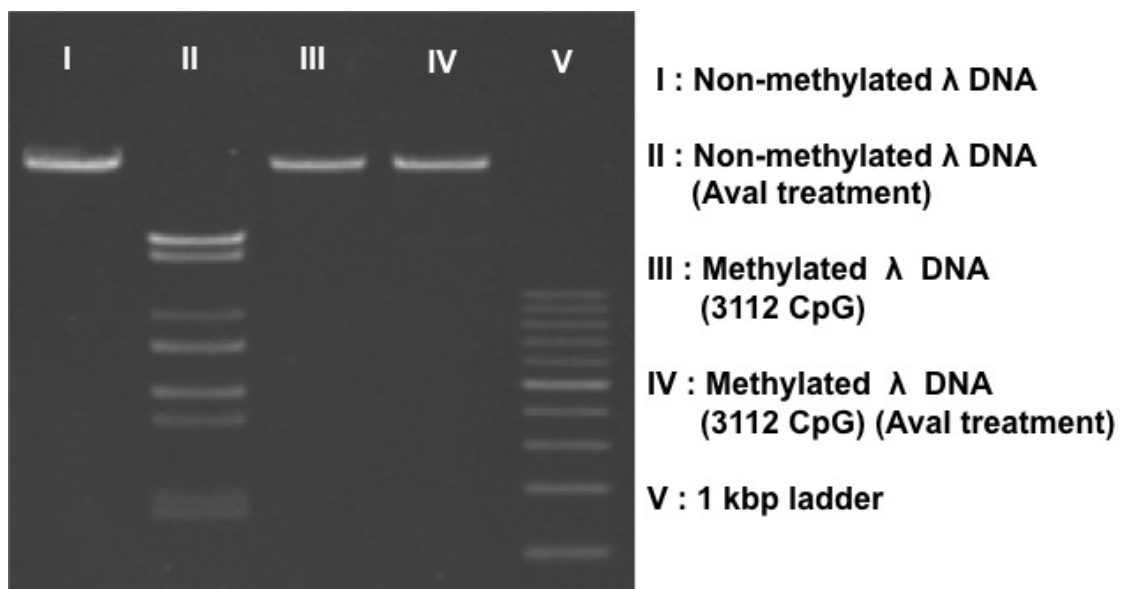


Figure S1 Non-methylated and methylated  $\lambda$  DNA molecules were digested by using the restriction enzyme AvaI. Methylated  $\lambda$  DNA molecules showed a resistance to enzymatic digestion.